

Follow Sammy's
Fins on the

HULL FISH TRAIL!

Visit
Hull



A **fin-tastic** family adventure through **Hull's** maritime past!

Meet **SAMMY**, the storytelling Salmon!

Your guide to Hull's
fishing tales and
watery wonders!

Species: Atlantic Salmon

Did you know the Atlantic Salmon is a super swimmer? It hatches in rivers, grows big in the sea, then returns home to lay eggs. **It can jump really high - taller than a grown-up!** Some people call it the "King of Fish" because it's so strong and fast!

Can
you jump
higher than
Sammy?

3.5m

Sammy's story

Sammy was once a young fry swimming in the **River Hull** before setting off on a grand adventure through the North Sea. After years exploring the ocean, he's returned to Hull with a mission - to guide visitors through the **Hull Fish Trail** and share fascinating stories about the city's maritime past, its fishing industry, and the legendary creatures that once swam its waters.

Can you help young Sammy find his way through the **River Hull** to the **Humber**?



START

DRIFIELD



ESKE



BEVERLEY

DUNSWELL

HULL

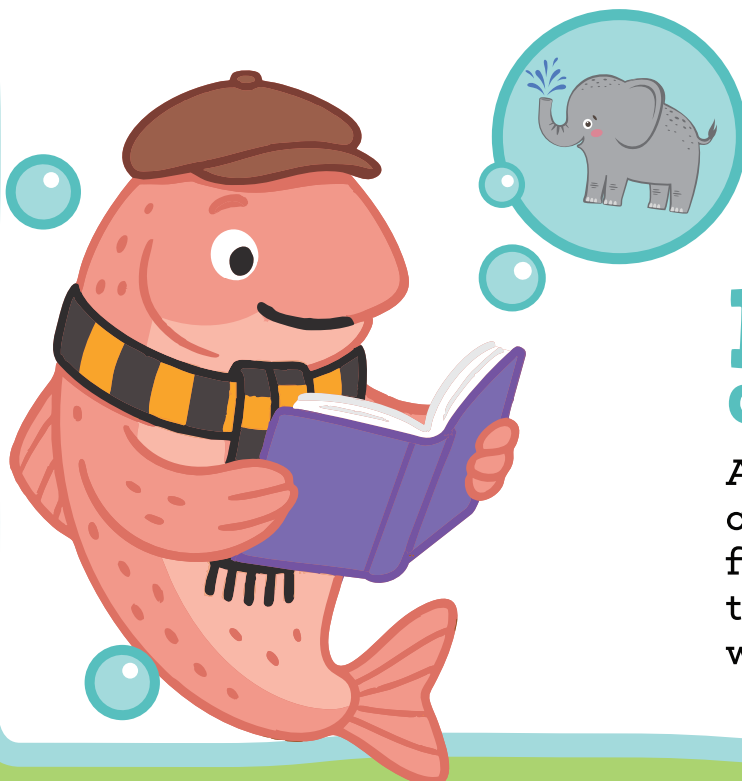
FINISH

HUMBER

You'll need to keep your eyes peeled and look to the pavements to spot the city's many fishy sculptures.

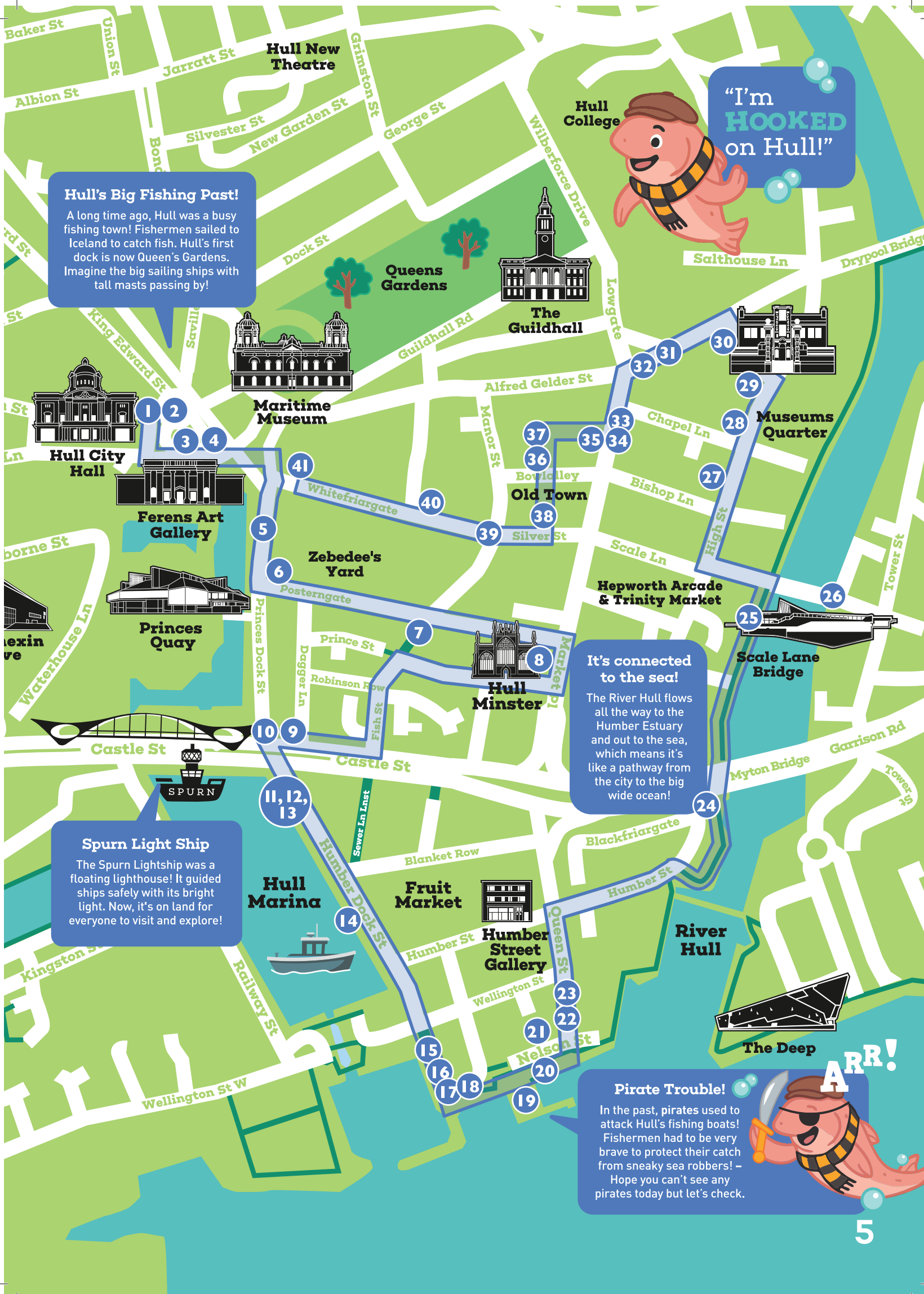
How many can you find?

- | | | |
|----------------|----------------------|--------------------------|
| 1 Anchovy | 15 Quib | 29 Whitebait |
| 2 Lobster | 16 Viviparous Blenny | 30 Electric Eel |
| 3 Cod | 17 Yawling | 31 Sea Trout |
| 4 X Ray Fish | 18 Haddock | 32 Lumpsucker |
| 5 Flying fish | 19 Umber | 33 John Dory |
| 6 Herring | 20 Ray | 34 Brill |
| 7 Plaice | 21 Turbot | 35 Gurnard/
Sea Robin |
| 8 Mackerel | 22 Naucrates Ductor | 36 Oarfish |
| 9 Dogfish | 23 Garfish | 37 Squid |
| 10 Catfish | 24 Icefish | 38 Hake |
| 11 Starfish | 25 Eel | 39 Monkfish |
| 12 Mussel | 26 Salmon | 40 Shark |
| 13 Warty Doris | 27 Crab | 41 Zander |
| 14 Swordfish | 28 Shrimp | |



BIGGEST CATCH EVER!

A boat from Hull once caught over 375 tons of fish on just one trip - that's about the same weight as **50 elephants!**



Hull's Big Fishing Past!

A long time ago, Hull was a busy fishing town! Fishermen sailed to Iceland to catch fish. Hull's first dock is now Queen's Gardens. Imagine the big sailing ships with tall masts passing by!

"I'm
HOOKED
on Hull!"

It's connected to the sea!

The River Hull flows all the way to the Humber Estuary and out to the sea, which means it's like a pathway from the city to the big wide ocean!

Spurn Light Ship

The Spurn Lightship was a floating lighthouse! It guided ships safely with its bright light. Now, it's on land for everyone to visit and explore!

Pirate Trouble!

In the past, pirates used to attack Hull's fishing boats! Fishermen had to be very brave to protect their catch from sneaky sea robbers! - Hope you can't see any pirates today but let's check.

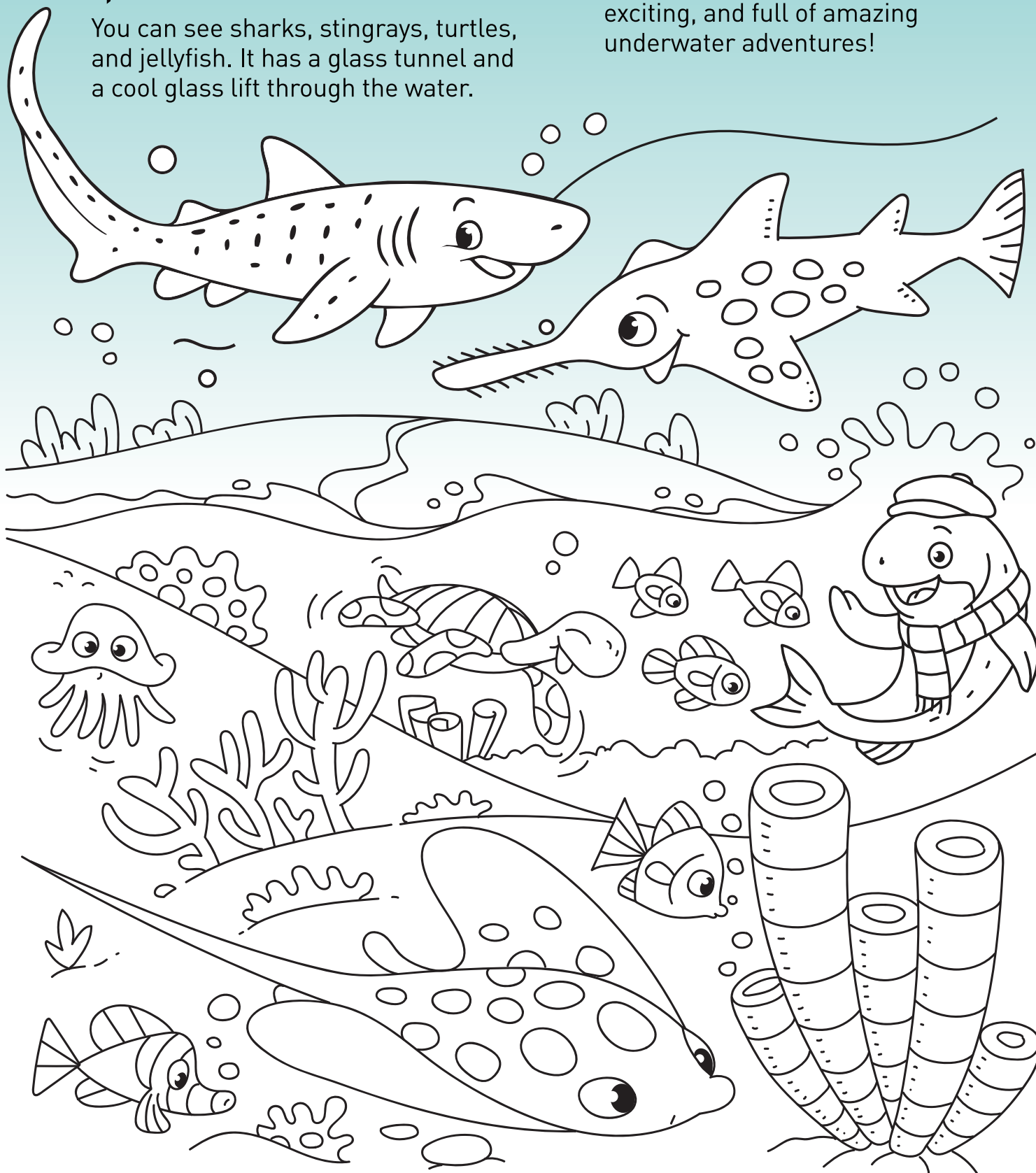
ARR!

THE DEEP

The Deep in Hull is home to over 5,000 sea creatures!

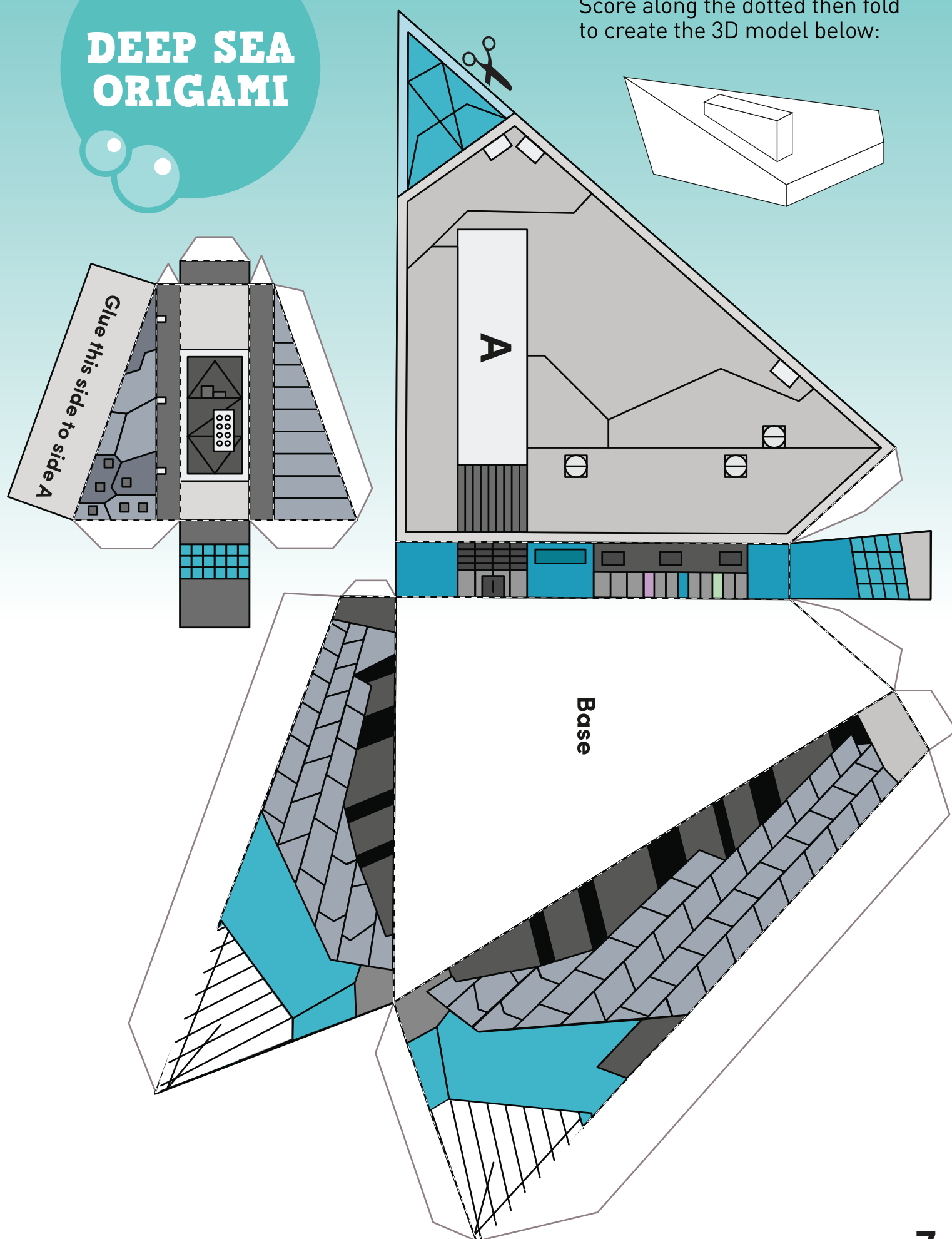
You can see sharks, stingrays, turtles, and jellyfish. It has a glass tunnel and a cool glass lift through the water.

The Deep helps protect oceans and sea life. It's fun, exciting, and full of amazing underwater adventures!



DEEP SEA ORIGAMI

Cut around the net carefully.
Score along the dotted then fold
to create the 3D model below:





As you explore the fish trail and find the fish on the streets, find them in the **wordsearch** and cross them off the list!

L	O	B	S	T	E	R	P	H	Y	G	I	M	N	E
X	B	D	S	R	K	M	P	V	S	P	D	I	X	E
R	A	A	E	A	I	Q	O	H	S	I	F	G	O	D
A	N	B	R	R	L	H	Y	W	H	A	F	M	X	Y
Y	I	T	H	C	C	M	D	N	R	K	A	T	J	D
F	R	S	H	N	J	R	O	H	U	C	X	T	A	Z
I	E	Z	A	P	F	J	M	N	K	O	B	U	C	C
S	H	R	K	L	Y	H	T	E	S	D	N	O	G	O
H	D	M	N	A	L	Y	R	W	R	D	E	R	N	V
B	E	L	Q	I	F	E	N	E	O	A	I	T	G	J
U	R	R	M	C	L	H	D	M	B	H	X	A	N	P
S	Z	G	R	E	L	E	C	T	R	I	C	E	E	L
K	Y	H	S	I	F	D	R	O	W	S	C	S	I	F
V	G	R	H	P	N	Q	I	S	G	A	P	A	X	Q
Y	M	J	V	S	F	G	X	E	G	X	C	H	Z	F

ANCHOVY

CATFISH

CRAB

DOGFISH

ELECTRIC EEL

HADDOCK

HERRING

LOBSTER

MACKEREL

PLAICE

SALMON

SEA TROUT

SHRIMP

SWORDFISH

X RAY FISH



Can you help Sammy find the hidden sea creatures?



Can you spot **8** differences?

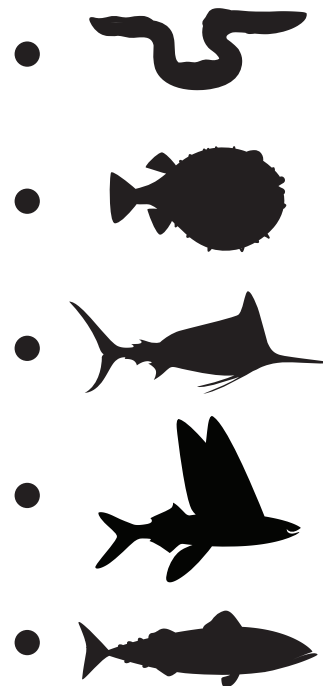
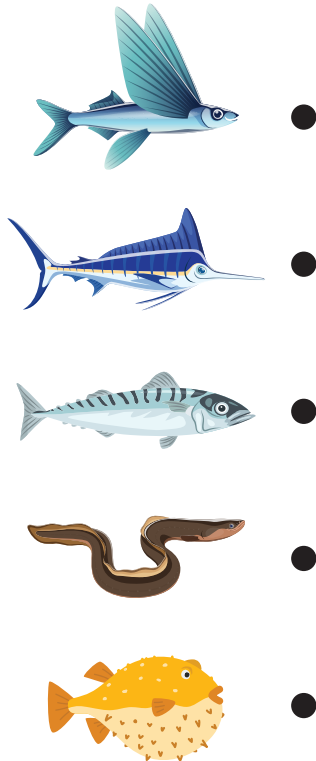


Catch Your Own Fish!

Spot a fish on the trail? Place this page over it and rub with a crayon, press gently and see the fish appear!

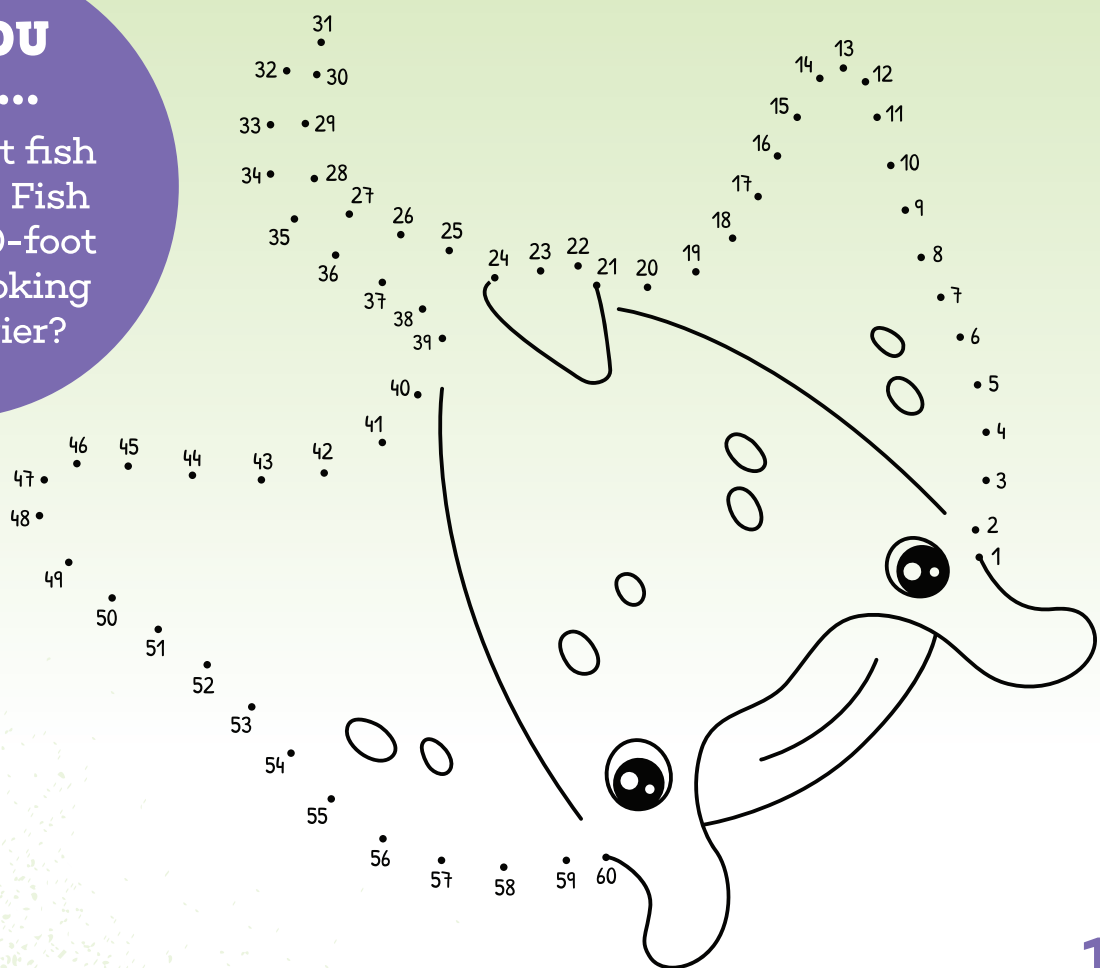


Can you find the correct shadow?



DID YOU KNOW...

...the biggest fish on the Hull Fish Trail is a 10-foot Ray overlooking Victoria Pier?





 @VisitHullUK

 facebook.com/VisitHull/

 @VisitHull

visithull.org



**Dive into the
Fish Trail –
your Hull
adventure
starts here!**